

QR1-S standard series

- Bulkhead plug connector, plastic
- push-in fitting
- Ø 4 Ø 6 Ø 8 Ø 10 Ø 12
- push-in fitting
- Ø 4 Ø 6 Ø 8 Ø 10 Ø 12
- QR1-S-RSC



Working pressure min./max.

-0,95 ... 10 bar

Ambient temperature min./max.

0 ... 60 °C

Weight

See table below

Technical data

Part No.	Port G	Port D	Delivery unit	Weight
R412005051	Ø 4	Ø 4	10 piece	0,007 kg
R412005052	Ø 6	Ø 6	10 piece	0,01 kg
R412005053	Ø 8	Ø 8	10 piece	0,014 kg
R412005054	Ø 10	Ø 10	10 piece	0,023 kg
R412005055	Ø 12	Ø 12	10 piece	0,031 kg

Weight per piece

Technical information

The series QR1 (plastic) and QR2 (metal) can not be combined

For further information about assembling and tolerances of adaptable tubing can be found in the "Technical information" document (available in the MediaCentre).

Technical information

Material	
Material	nickel-plated
Housing	Polybutyleneterephthalate
Seal	Acrylonitrile butadiene rubber
Tooth lock washer	Stainless steel
Release ring	Polyoxymethylene

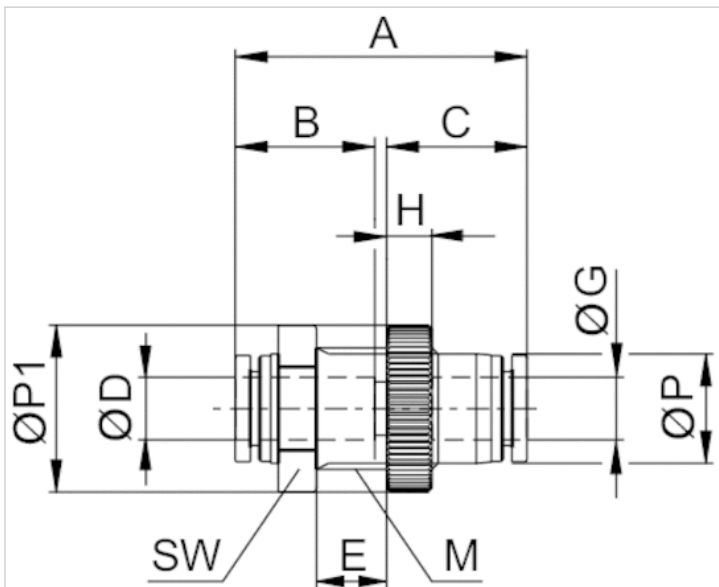
Material

Release ring holder

Die cast zinc Brass, nickel-plated

Dimensions

Dimensions



Dimensions

Part No.	Port D	Port G	M	A	B	C	E 1)	H	Ø P	Ø P1	SW
R412005051	Ø 4	Ø 4	M12x1,5	32.2	15.6	16	7.8	5	10.4	16	14
R412005052	Ø 6	Ø 6	M14x1,5	36	17.2	17	9.2	5	12.4	18	17
R412005053	Ø 8	Ø 8	M16x1,5	38.5	18.4	18.5	9.2	6	14.4	22	19
R412005054	Ø 10	Ø 10	M20x2,0	43.6	21	21	10.8	6	17.6	28	24
R412005055	Ø 12	Ø 12	M24x2,0	47.6	22.5	22.5	16.2	6	21.2	31	27

1) Max.