

QR1-S standard series

- Connection pieces, reducing
- pin bushing
- Ø 6 Ø 8 Ø 10 Ø 12
- pin bushing
- Ø 4 Ø 6 Ø 8 Ø 10
- QR1-S-RDR



| | |
|-------------------------------|------------------|
| Working pressure min./max. | -0,95 ... 10 bar |
| Ambient temperature min./max. | 0 ... 60 °C |
| Weight | See table below |

Technical data

| Part No. | Port G | Port D | Delivery unit | Weight |
|------------|--------|--------|---------------|----------|
| R412005323 | Ø 6 | Ø 4 | 10 piece | 0,001 kg |
| R412005324 | Ø 8 | Ø 4 | 10 piece | 0,001 kg |
| R412005325 | Ø 8 | Ø 6 | 10 piece | 0,002 kg |
| R412005326 | Ø 10 | Ø 6 | 10 piece | 0,002 kg |
| R412005327 | Ø 10 | Ø 8 | 10 piece | 0,003 kg |
| R412005328 | Ø 12 | Ø 8 | 10 piece | 0,003 kg |
| R412005329 | Ø 12 | Ø 10 | 10 piece | 0,005 kg |

Weight per piece

Technical information

The series QR1 (plastic) and QR2 (metal) can not be combined

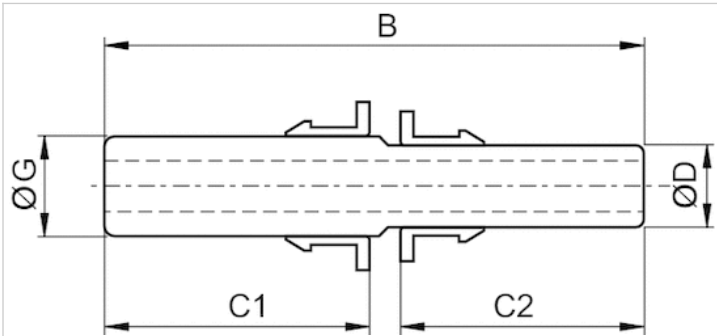
For further information about assembling and tolerances of adaptable tubing can be found in the "Technical information" document (available in the MediaCentre).

Technical information

| Material | |
|----------|---------------------------|
| Material | nickel-plated |
| Housing | Polybutyleneterephthalate |

Dimensions

Dimensions



Dimensions

| Part No. | Port D | Port G | B | C1 | C2 |
|------------|--------|--------|----|------|------|
| R412005323 | Ø 4 | Ø 6 | 36 | 17 | 16 |
| R412005324 | Ø 4 | Ø 8 | 38 | 18.9 | 18 |
| R412005325 | Ø 6 | Ø 8 | 39 | 18.5 | 17 |
| R412005326 | Ø 6 | Ø 10 | 42 | 21.9 | 19 |
| R412005327 | Ø 8 | Ø 10 | 43 | 21 | 18.5 |
| R412005328 | Ø 8 | Ø 12 | 45 | 23.9 | 20 |
| R412005329 | Ø 10 | Ø 12 | 48 | 22.5 | 21 |