

Series QR1-S Mini

- Y-Plug connector, reducing
- push-in fitting
- Ø 4
- push-in fitting
- Ø 3
- QR1-S-MYR



Working pressure min./max.

-0,95 ... 10 bar

Ambient temperature min./max.

0 ... 60 °C

Weight

0,004 kg

Weight per piece

Technical data

Part No.	Port G	Port D	Delivery unit
R412005432	Ø 4	Ø 3	25 piece
R412005433	Ø 6	Ø 4	25 piece

Technical information

The series QR1 (plastic) and QR2 (metal) can not be combined

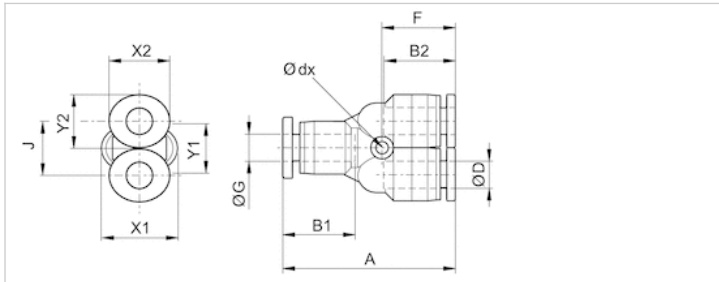
For further information about assembling and tolerances of adaptable tubing can be found in the "Technical information" document (available in the MediaCentre).

Technical information

Material	
Material	nickel-plated
Housing	Polybutyleneterephthalate
Seal	Acrylonitrile butadiene rubber
Tooth lock washer	Stainless steel
Release ring	Polyoxymethylene
Release ring holder	Die cast zinc Brass, nickel-plated

Dimensions

Dimensions



Dimensions

Part No.	Port D	Port G	Ø dx	A	B1	B2	F	J	X1	X2	Y1	Y2
R412005432	Ø 3	Ø 4	3.2	30	11.5	9.5	13.4	8	10	7	8	6
R412005433	Ø 4	Ø 6	3.2	31.5	12.5	11.5	13.6	10.5	12	10	10	8