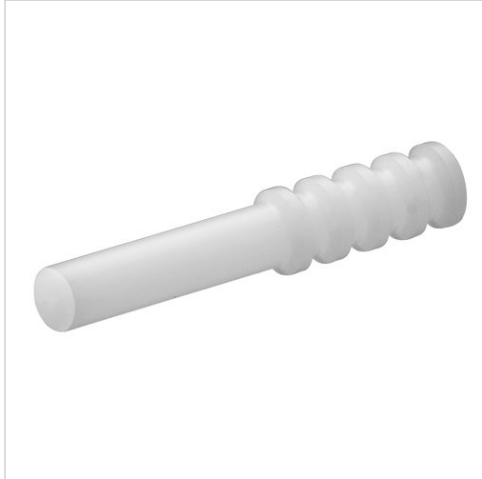


Series QR1-S Mini

- Blanking plug
- pin bushing
- Ø 3
- QR1-S-MBS



Working pressure min./max. -0,95 ... 10 bar
Ambient temperature min./max. 0 ... 60 °C

Technical data

Part No.	Port G	Delivery unit
R412005447	Ø 3	25 piece

Technical information

The series QR1 (plastic) and QR2 (metal) can not be combined

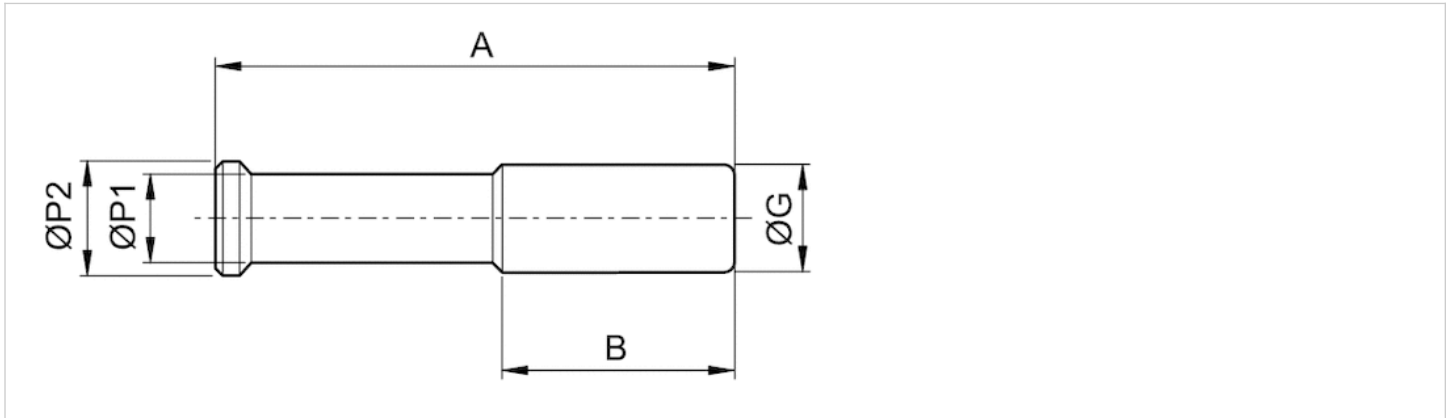
For further information about assembling and tolerances of adaptable tubing can be found in the "Technical information" document (available in the MediaCentre).

Technical information

Material	
Material	nickel-plated
Housing	Polybutyleneterephthalate

Dimensions

Dimensions



Dimensions

Part No.	Port G	A	B	Ø P1	Ø P2
R412005447	Ø 3	22	9.5	3	4