

# QR1-S standard series

- Bulkhead connector
- Internal thread
- 3/8 NPT 1/8 NPT 1/4 NPT
- push-in fitting
- Ø1/2 Ø3/8 Ø5/16 Ø1/4
- QR1-S-RSI



Working pressure min./max.

-0,95 ... 10 bar

Ambient temperature min./max.

0 ... 60 °C

Weight

See table below

## Technical data

Part No.	Port G	Port D	Delivery unit	Weight
R432000142	3/8 NPT	Ø1/2	10 piece	0,08 kg
R432000146	3/8 NPT	Ø3/8	10 piece	0,07 kg
R432000149	3/8 NPT	Ø5/16	10 piece	0,03 kg
R432000144	1/8 NPT	Ø1/4	10 piece	0,027 kg
R432000143	1/4 NPT	Ø1/4	10 piece	0,032 kg
R432000145	1/4 NPT	Ø3/8	10 piece	0,059 kg
R432000147	1/4 NPT	Ø3/8	10 piece	0,041 kg

Weight per piece

## Technical information

The series QR1 (plastic) and QR2 (metal) can not be combined

These pneumatic components with NPT or inch thread dimensions are only available from our US sales organization.

For further information about assembling and tolerances of adaptable tubing can be found in the "Technical information" document (available in the MediaCentre).

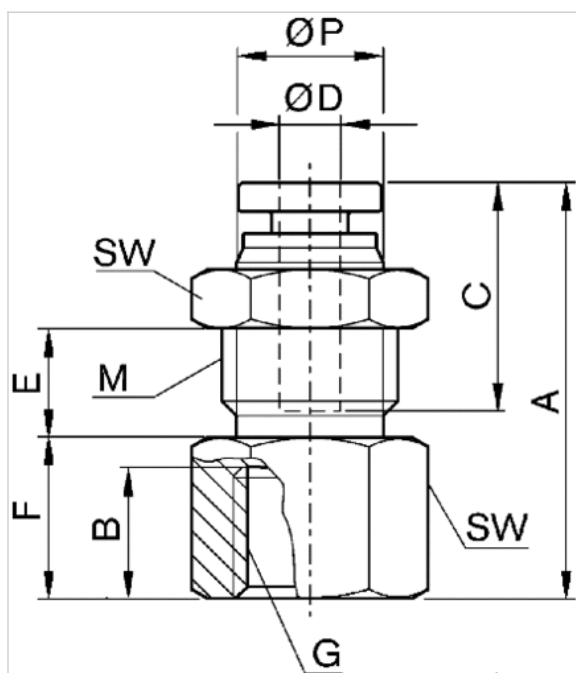
## Technical information

Material	
Material	nickel-plated
Housing	Brass, nickel-plated
Seal	Acrylonitrile butadiene rubber

Material	
Tooth lock washer	Stainless steel
Release ring	Polyoxymethylene
Release ring holder	Die cast zinc Brass, nickel-plated
Thread	Brass, nickel-plated

## Dimensions

### Dimensions in inches



### Dimensions in inches

Part No.	Port D	Port G	M	A	B	C	E	F	SW	Ø P
R432000142	Ø1/2	3/8 NPT	7/8 UNF	1.52	0.51	0.89	0.34	0.59	1	0.8
R432000146	Ø3/8	3/8 NPT	7/8 UNF	1.44	0.51	0.83	0.23	0.59	1	0.67
R432000149	Ø5/16	3/8 NPT	5/8 UNF	1.45	0.51	0.73	0.33	0.59	3/4	0.55
R432000144	Ø1/4	1/8 NPT	9/16 UNF	1.08	0.36	0.67	0.25	0.35	11/16	0.47
R432000143	Ø1/4	1/4 NPT	9/16 UNF	1.26	0.47	0.67	0.25	0.53	11/16	0.47
R432000145	Ø3/8	1/4 NPT	7/8 UNF	1.4	0.47	0.83	0.23	0.55	1	0.67
R432000147	Ø3/8	1/4 NPT	5/8 UNF	1.41	0.47	0.73	0.33	0.55	3/4	0.55