

QR1-S standard series

- Swivel banjo connection 1-fold
- External thread
- 10-32 UNF 3/8 NPT 1/8 NPT 1/4 NPT 1/2 NPT
- push-in fitting
- Ø5/32 Ø3/8 Ø1/2 Ø1/4 Ø5/16
- QR1-S-RW1



Working pressure min./max.

-0,95 ... 10 bar

Ambient temperature min./max.

0 ... 60 °C

Weight

See table below

Technical data

Part No.	Port G	Port D	Weight
R432000254	10-32 UNF	Ø5/32	0,05 kg
R432000251	3/8 NPT	Ø3/8	0,032 kg
R432000247	3/8 NPT	Ø1/2	0,05 kg
R432000248	1/8 NPT	Ø1/4	0,009 kg
R432000253	1/8 NPT	Ø5/16	0,014 kg
R432000255	1/8 NPT	Ø5/32	0,053 kg
R432000249	1/4 NPT	Ø1/4	0,018 kg
R432000250	1/4 NPT	Ø3/8	0,032 kg
R432000252	1/4 NPT	Ø5/16	0,027 kg
R432000246	1/2 NPT	Ø1/2	0,059 kg

Weight per piece

Technical information

The series QR1 (plastic) and QR2 (metal) can not be combined

Thread seal with captive O-ring

These pneumatic components with NPT or inch thread dimensions are only available from our US sales organization.

For further information about assembling and tolerances of adaptable tubing can be found in the "Technical information" document (available in the MediaCentre).

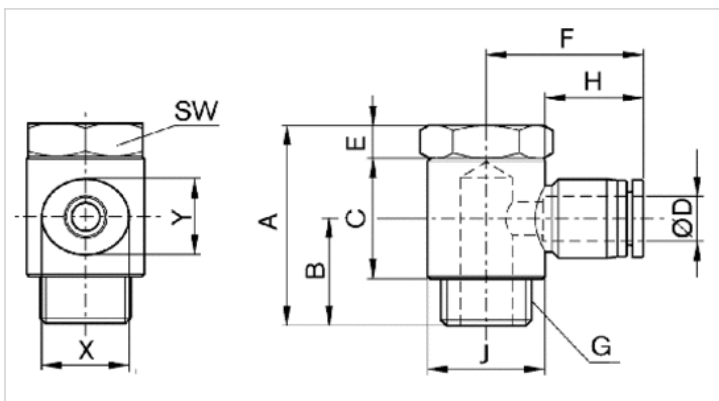
Technical information

Material

Material	nickel-plated
Housing	Polybutyleneterephthalate
Seal	Acrylonitrile butadiene rubber
Tooth lock washer	Stainless steel
Release ring	Polyoxymethylene
Release ring holder	Die cast zinc Brass, nickel-plated
Thread	Brass, nickel-plated

Dimensions

Dimensions in inches



Dimensions in inches

Part No.	Port D	Port G	A	B	C	E	F	H	Ø J	SW	X	Y
R432000254	Ø5/32	10-32 UNF	0.61	-	0.351	0.118	0.78	0.63	0.41	13/32	0.47	0.39
R432000251	Ø3/8	3/8 NPT	1.28	-	0.611	0.197	1.26	0.83	0.87	3/4	0.75	0.67
R432000247	Ø1/2	3/8 NPT	1.28	-	0.611	0.197	1.43	0.89	0.87	3/4	0.91	0.83
R432000248	Ø1/4	1/8 NPT	0.95	-	0.473	0.158	0.93	0.67	0.57	7/16	0.55	0.47
R432000253	Ø5/16	1/8 NPT	1.08	-	0.465	0.177	1.12	0.73	0.73	9/16	0.63	0.55
R432000255	Ø5/32	1/8 NPT	0.95	-	0.473	0.158	0.85	0.63	0.57	7/16	0.47	0.39
R432000249	Ø1/4	1/4 NPT	1.08	-	0.465	0.177	1.01	0.67	0.73	9/16	0.55	0.47
R432000250	Ø3/8	1/4 NPT	1.08	-	0.465	0.177	1.25	0.83	0.73	9/16	0.75	0.67
R432000252	Ø5/16	1/4 NPT	1.15	-	0.611	0.197	1.13	0.73	0.87	9/16	0.63	0.55
R432000246	Ø1/2	1/2 NPT	1.49	-	0.697	0.197	1.43	0.89	1.1	1	0.91	0.83