

QR1-S standard series

- Swivel banjo connection 2-fold, with internal thread
- External thread
- 10-32 UNF 3/8 NPT 1/8 NPT 1/4 NPT 1/2 NPT
- push-in fitting
- Ø5/32 Ø3/8 Ø1/4 Ø5/16 Ø1/2
- Internal thread
- 10-32 UNF 3/8 NPT 1/4 NPT 1/2 NPT
- QR1-S-RID



Working pressure min./max.	-0,95 ... 10 bar
Ambient temperature min./max.	0 ... 60 °C
Weight	See table below

Technical data

Part No.	Port G	Port D	Weight
R432000075	10-32 UNF	Ø5/32	0,009 kg
R432000073	3/8 NPT	Ø3/8	0,18 kg
R432000072	1/8 NPT	Ø1/4	0,027 kg
R432000074	1/4 NPT	Ø5/16	0,05 kg
R432000071	1/2 NPT	Ø1/2	0,29 kg

Weight per piece

Technical information

The series QR1 (plastic) and QR2 (metal) can not be combined

Thread seal with captive O-ring

These pneumatic components with NPT or inch thread dimensions are only available from our US sales organization.

For further information about assembling and tolerances of adaptable tubing can be found in the "Technical information" document (available in the MediaCentre).

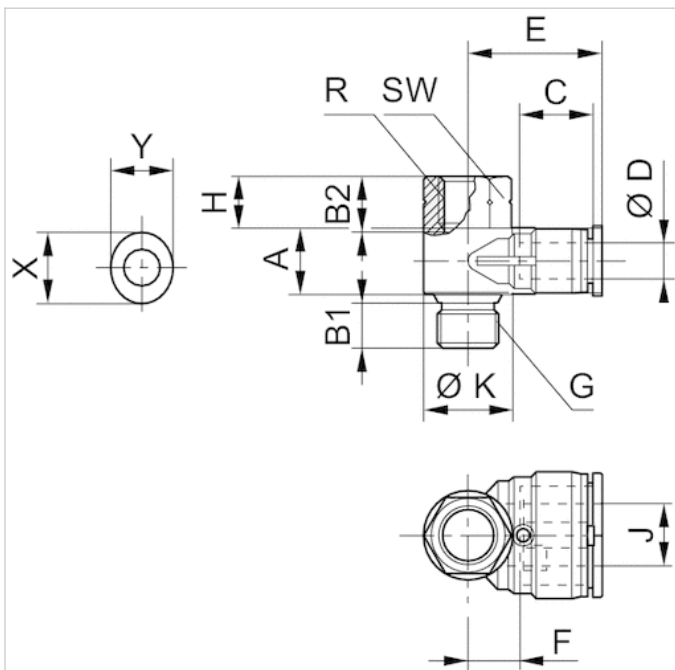
Technical information

Material	
Material	nickel-plated
Housing	Polybutyleneterephthalate

Material	
Seal	Acrylonitrile butadiene rubber
Tooth lock washer	Stainless steel
Release ring	Polyoxymethylene
Release ring holder	Die cast zinc Brass, nickel-plated
Thread	Brass, nickel-plated

Dimensions

Dimensions in inches



Dimensions in inches

Part No.	Port R	Port D	Port G	A	B1	B2	C	E	H	J	Ø K	SW	X	Y
R432000075	10-32 UNF	Ø5/32	10-32 UNF	0.35	0.16	0.2	0.2	0.83	0.26	0.39	0.39	5/16	0.47	0.39
R432000073	3/8 NPT	Ø3/8	3/8 NPT	0.83	0.47	0.63	0.63	1.51	0.67	0.79	1.18	7/8	0.75	0.67
R432000072	1/4 NPT	Ø1/4	1/8 NPT	0.59	0.32	0.47	0.47	1.19	0.45	0.55	0.79	9/16	0.55	0.47
R432000074	1/4 NPT	Ø5/16	1/4 NPT	0.71	0.43	0.51	0.51	1.35	0.53	0.67	0.91	11/16	0.63	0.55
R432000071	1/2 NPT	Ø1/2	1/2 NPT	0.83	0.59	0.63	0.63	1.51	0.67	0.79	1.18	1	0.91	0.83