

QR1-S standard series

- Connector, 3x, reducing
- External thread
- 3/8 NPT 1/4 NPT
- push-in fitting
- Ø5/16 Ø1/4 Ø5/32
- push-in fitting
- Ø3/8 Ø5/16
- QR1-S-RMG



Working pressure min./max.	-0,95 ... 10 bar
Ambient temperature min./max.	0 ... 60 °C
Weight	See table below

Technical data

Part No.	Port G	Port D	Delivery unit	Weight
R432000110	3/8 NPT	Ø5/16	10 piece	0,05 kg
R432000111	1/4 NPT	Ø1/4	10 piece	0,032 kg
R432000112	1/4 NPT	Ø5/32	10 piece	0,032 kg

Weight per piece

Technical information

The series QR1 (plastic) and QR2 (metal) can not be combined

Thread seal with captive O-ring

These pneumatic components with NPT or inch thread dimensions are only available from our US sales organization.

For further information about assembling and tolerances of adaptable tubing can be found in the "Technical information" document (available in the MediaCentre).

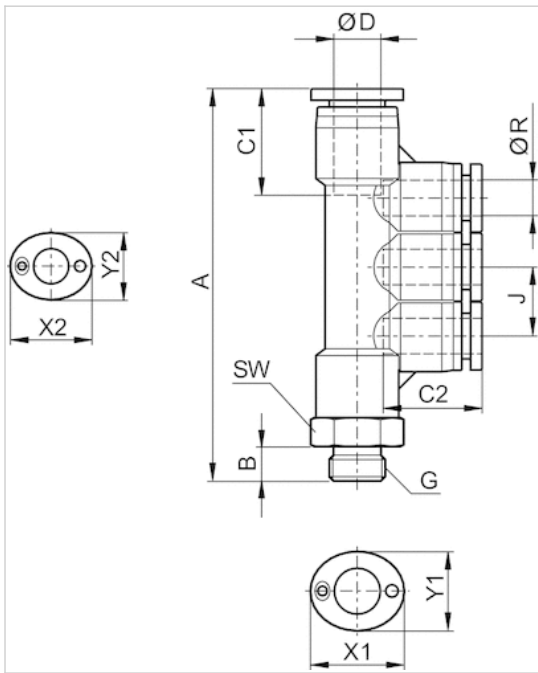
Technical information

Material	
Material	nickel-plated
Housing	Polybutyleneterephthalate
Seal	Acrylonitrile butadiene rubber
Tooth lock washer	Stainless steel

Material	
Release ring	Polyoxymethylene
Release ring holder	Die cast zinc Brass, nickel-plated
Thread	Brass, nickel-plated

Dimensions

Dimensions in inches



Dimensions in inches

Part No.	Port R	Port D	Port G	ØD2	A	B	C1	C2	J	SW	X1	Y1	X2	Y2
R432000110	Ø3/8	Ø5/16	3/8 NPT	5/16	2.34	0.47	0.83	0.73	0.55	7/32	0.63	0.67	0.63	0.55
R432000111	Ø5/16	Ø1/4	1/4 NPT	5/16	2.7	0.43	0.73	0.67	0.47	9/16	0.63	0.55	0.55	0.47
R432000112	Ø5/16	Ø5/32	1/4 NPT	3/8	2.51	0.43	0.73	0.63	0.39	9/16	0.63	0.55	0.47	0.39