

QR1-S standard series

- Angled plug-in connector, long
- pin bushing
- Ø5/32 Ø5/16 Ø3/8 Ø1/4 Ø1/2
- push-in fitting
- Ø5/32 Ø5/16 Ø3/8 Ø1/4 Ø1/2
- QR1-S-RLL



Working pressure min./max.	-0,95 ... 10 bar
Ambient temperature min./max.	0 ... 60 °C
Weight	See table below

Technical data

Part No.	Port G	Port D	Delivery unit	Weight
R432000092	Ø5/32	Ø5/32	10 piece	0,005 kg
R432000091	Ø5/16	Ø5/16	10 piece	0,009 kg
R432000090	Ø3/8	Ø3/8	10 piece	0,014 kg
R432000089	Ø1/4	Ø1/4	10 piece	0,005 kg
R432000088	Ø1/2	Ø1/2	10 piece	0,018 kg

Weight per piece

Technical information

The series QR1 (plastic) and QR2 (metal) can not be combined
These pneumatic components with NPT or inch thread dimensions are only available from our US sales organization.

For further information about assembling and tolerances of adaptable tubing can be found in the "Technical information" document (available in the MediaCentre).

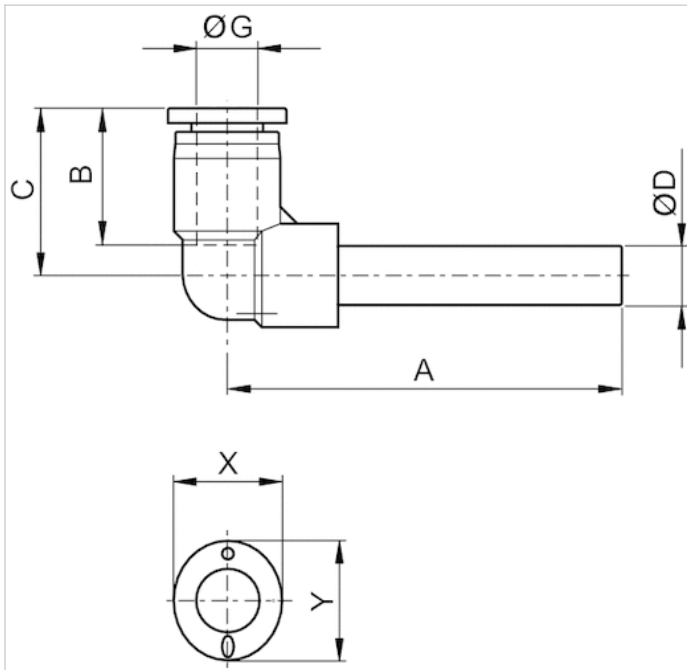
Technical information

Material	
Material	nickel-plated
Housing	Polybutyleneterephthalate
Seal	Acrylonitrile butadiene rubber
Tooth lock washer	Stainless steel

Material	
Release ring	Polyoxymethylene
Release ring holder	Die cast zinc Brass, nickel-plated

Dimensions

Dimensions in inches



Dimensions in inches

Part No.	Port D	Port G	A	B	C	X	Y
R432000092	$\text{Ø}5/32$	$\text{Ø}5/32$	1.55	0.63	0.74	0.47	0.39
R432000091	$\text{Ø}5/16$	$\text{Ø}5/16$	2.13	0.73	0.9	0.63	0.55
R432000090	$\text{Ø}3/8$	$\text{Ø}3/8$	2.44	0.83	1.03	0.75	0.67
R432000089	$\text{Ø}1/4$	$\text{Ø}1/4$	1.96	0.67	0.83	0.55	0.47
R432000088	$\text{Ø}1/2$	$\text{Ø}1/2$	2.7	0.89	1.15	0.91	0.83