

QR1-S standard series

- Connection piece
- pin bushing
- Ø5/32 Ø5/16 Ø3/8 Ø1/4 Ø1/2
- pin bushing
- Ø5/32 Ø5/16 Ø3/8 Ø1/4 Ø1/2
- QR1-S-RDS



Working pressure min./max.	-0,95 ... 10 bar
Ambient temperature min./max.	0 ... 60 °C
Weight	0,005 kg
	Weight per piece

Technical data

Part No.	Port G	Port D	Delivery unit
R432000062	Ø5/32	Ø5/32	20 piece
R432000060	Ø5/16	Ø5/16	20 piece
R432000058	Ø3/8	Ø3/8	20 piece
R432000056	Ø1/4	Ø1/4	20 piece
R432000054	Ø1/2	Ø1/2	20 piece

Technical information

The series QR1 (plastic) and QR2 (metal) can not be combined

These pneumatic components with NPT or inch thread dimensions are only available from our US sales organization.

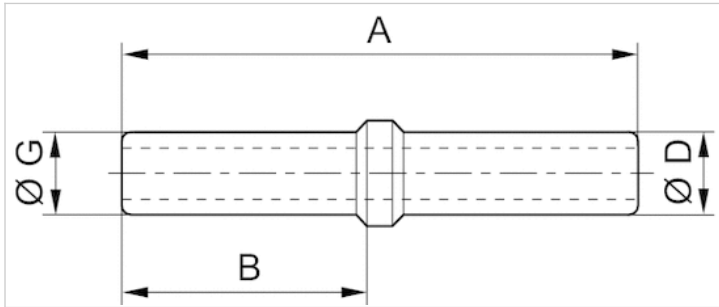
For further information about assembling and tolerances of adaptable tubing can be found in the "Technical information" document (available in the MediaCentre).

Technical information

Material	
Material	nickel-plated
Housing	Polybutyleneterephthalate

Dimensions

Dimensions



Dimensions in inches

Part No.	Port D	Port G	A	B
R432000062	Ø5/32	Ø5/32	1.38	0.63
R432000060	Ø5/16	Ø5/16	1.81	0.83
R432000058	Ø3/8	Ø3/8	1.97	0.83
R432000056	Ø1/4	Ø1/4	1.46	0.67
R432000054	Ø1/2	Ø1/2	1.97	0.89