

QR1-S standard series

- Swivel banjo connection 2-fold, with internal thread
- External thread
- 10-32 UNF 3/8 NPT 1/8 NPT 1/4 NPT 1/2 NPT
- push-in fitting
- Ø5/32 Ø3/8 Ø1/4 Ø5/16 Ø1/2
- Internal thread
- G 1/2
- QR1-S-RWD



Working pressure min./max.	-0,95 ... 10 bar
Ambient temperature min./max.	0 ... 60 °C
Weight	0,118 kg

Technical data

Part No.	Port G	Port D	Delivery unit
R432000011	10-32 UNF	Ø5/32	5 piece
R432000009	3/8 NPT	Ø3/8	5 piece
R432000008	1/8 NPT	Ø1/4	5 piece
R432000010	1/4 NPT	Ø5/16	5 piece
R432000007	1/2 NPT	Ø1/2	5 piece

Technical information

The series QR1 (plastic) and QR2 (metal) can not be combined

Thread seal with captive O-ring

These pneumatic components with NPT or inch thread dimensions are only available from our US sales organization.

For further information about assembling and tolerances of adaptable tubing can be found in the "Technical information" document (available in the MediaCentre).

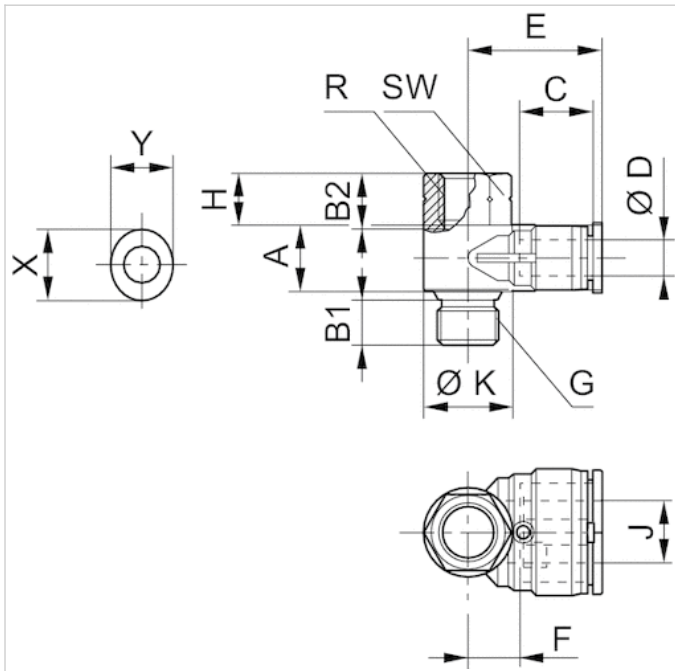
Technical information

Material	
Material	nickel-plated
Housing	Polybutyleneterephthalate
Seal	Acrylonitrile butadiene rubber

Material	
Tooth lock washer	Stainless steel
Release ring	Polyoxymethylene
Release ring holder	Die cast zinc Brass, nickel-plated
Thread	Brass, nickel-plated

Dimensions

Dimensions in inches



Dimensions in inches

Part No.	Port R	Port D	Port G	A	B1	B2	C	E	H	J	ØK	SW	X	Y
R432000011	G 1/2	Ø5/32	10-32 UNF	0.35	0.19	--	0.63	0.83	0.26	0.4	0.39	5/16	0.47	0.39
R432000009	G 1/2	Ø3/8	3/8 NPT	0.83	0.47	--	0.83	1.51	0.67	0.79	1.18	7/8	0.75	0.67
R432000008	G 1/2	Ø1/4	1/8 NPT	0.591	0.32	--	0.67	1.19	0.45	0.55	0.79	9/16	0.55	0.47
R432000010	G 1/2	Ø5/16	1/4 NPT	0.71	0.43	--	0.73	1.35	0.53	0.67	0.91	11/16	0.63	0.55
R432000007	G 1/2	Ø1/2	1/2 NPT	0.83	0.59	--	0.89	1.51	0.67	0.79	1.18	1	0.91	0.83