

# Series QR1-S Mini

- Straight plug connector, reducing
- push-in fitting
- Ø5/32
- push-in fitting
- Ø1/8
- QR1-S-MSR



|                               |                  |
|-------------------------------|------------------|
| Working pressure min./max.    | -0,95 ... 10 bar |
| Ambient temperature min./max. | 0 ... 60 °C      |
| Weight                        | 0,005 kg         |
|                               | Weight per piece |

## Technical data

| Part No.   | Port G | Port D | Delivery unit |
|------------|--------|--------|---------------|
| R432000328 | Ø5/32  | Ø1/8   | 25 piece      |

## Technical information

The series QR1 (plastic) and QR2 (metal) can not be combined  
These pneumatic components with NPT or inch thread dimensions are only available from our US sales organization.

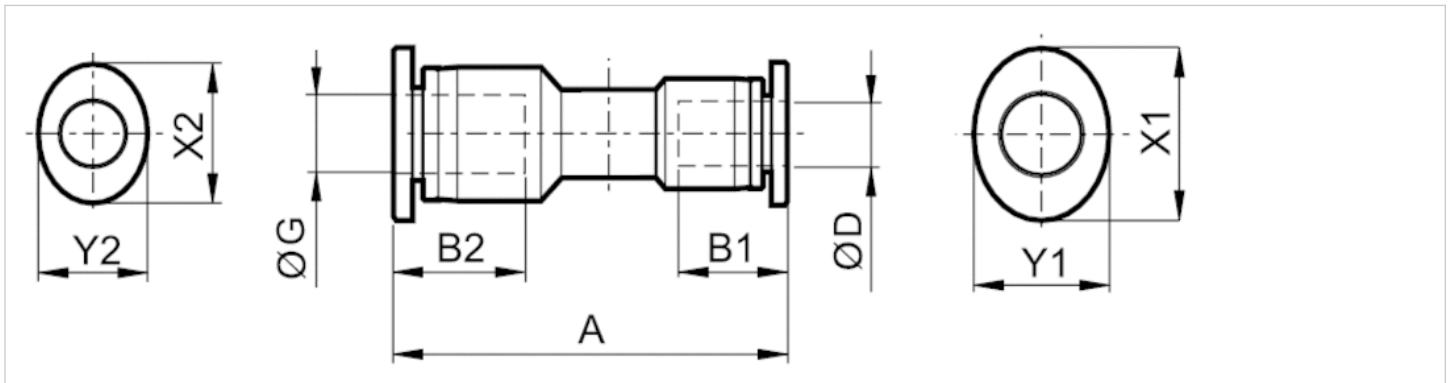
For further information about assembling and tolerances of adaptable tubing can be found in the "Technical information" document (available in the MediaCentre).

## Technical information

| Material            |                                    |
|---------------------|------------------------------------|
| Material            | nickel-plated                      |
| Housing             | Polybutyleneterephthalate          |
| Seal                | Acrylonitrile butadiene rubber     |
| Tooth lock washer   | Stainless steel                    |
| Release ring        | Polyoxymethylene                   |
| Release ring holder | Die cast zinc Brass, nickel-plated |

## Dimensions

### Dimensions in inches



### Dimensions in inches

| Part No.   | Port D | Port G | A    | B1   | B2   | X1   | Y1   | X2   | Y2   |
|------------|--------|--------|------|------|------|------|------|------|------|
| R432000328 | Ø1/8   | Ø5/32  | 0.84 | 0.46 | 0.35 | 0.28 | 0.24 | 0.39 | 0.31 |