

# Series QR1-S Mini

- Straight push-in fitting, reducing
- pin bushing
- Ø5/32
- push-in fitting
- Ø1/4
- QR1-S-MED



Working pressure min./max.

-0,95 ... 10 bar

Ambient temperature min./max.

0 ... 60 °C

Weight

0,005 kg

Weight per piece

## Technical data

Part No.	Port G	Port D	Delivery unit
R432000305	Ø5/32	Ø1/4	25 piece

## Technical information

The series QR1 (plastic) and QR2 (metal) can not be combined

These pneumatic components with NPT or inch thread dimensions are only available from our US sales organization.

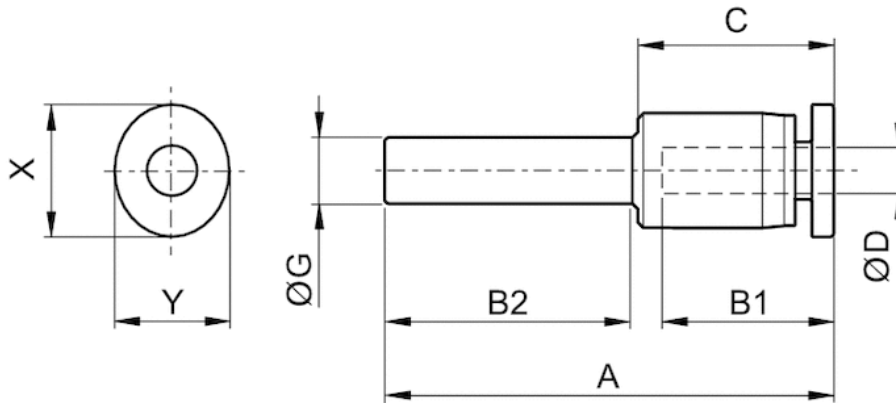
For further information about assembling and tolerances of adaptable tubing can be found in the "Technical information" document (available in the MediaCentre).

## Technical information

Material	
Material	nickel-plated
Housing	Polybutyleneterephthalate
Seal	Acrylonitrile butadiene rubber
Tooth lock washer	Stainless steel
Release ring	Polyoxymethylene
Release ring holder	Die cast zinc Brass, nickel-plated

## Dimensions

### Dimensions in inches



### Dimensions in inches

Part No.	Port D	Port G	A	B1	B2	C	X	Y
R432000305	Ø1/4	Ø5/32	1.29	0.46	0.47	0.5	0.39	0.31