

Series QR2-S, standard

- Elbow fitting, rotatable
- External thread
- M5 M7 G 1/8 G 1/4 G 3/8 G 1/2
- push-in fitting
- Ø 4 Ø 6 Ø 8 Ø 10 Ø 12 Ø 14 Ø 16
- QR2-S-RVT



Working pressure min./max.

-0,95 ... 16 bar

Ambient temperature min./max.

-20 ... 80 °C

Weight

See table below

Technical data

Part No.	Port G	Port D	Delivery unit	Weight
1823391709	M5	Ø 4	10 piece	0,015 kg
1823391889	M5	Ø 6	10 piece	0,016 kg
1823391885	M7	Ø 4	10 piece	0,017 kg
1823391886	M7	Ø 6	10 piece	0,017 kg
1823391710	G 1/8	Ø 4	10 piece	0,018 kg
1823391711	G 1/8	Ø 6	10 piece	0,02 kg
1823391712	G 1/8	Ø 8	10 piece	0,022 kg
R412007687	G 1/8	Ø 10	5 piece	0,032 kg
1823391713	G 1/4	Ø 4	10 piece	0,024 kg
1823391714	G 1/4	Ø 6	10 piece	0,025 kg
1823391715	G 1/4	Ø 8	10 piece	0,027 kg
1823391718	G 1/4	Ø 10	5 piece	0,031 kg
1823391843	G 1/4	Ø 12	5 piece	0,042 kg
1823391716	G 3/8	Ø 8	5 piece	0,042 kg
1823391717	G 3/8	Ø 10	5 piece	0,042 kg
1823391838	G 3/8	Ø 12	5 piece	0,045 kg
1823391839	G 3/8	Ø 14	5 piece	0,062 kg
R412010182	G 3/8	Ø 16	1 piece	0,072 kg
R412007589	G 1/2	Ø 10	5 piece	0,046 kg
1823391840	G 1/2	Ø 12	5 piece	0,065 kg
1823391841	G 1/2	Ø 14	5 piece	0,07 kg
R412007956	G 1/2	Ø 16	1 piece	0,084 kg

Weight per piece

Technical information

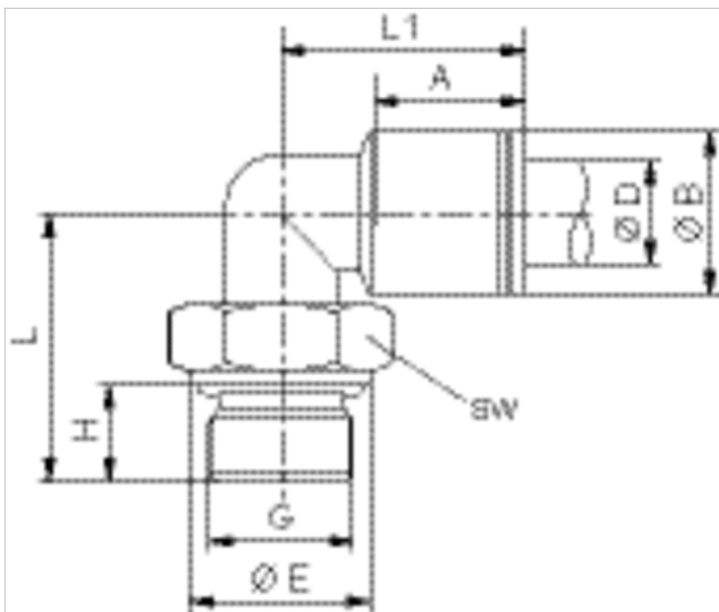
The series QR1 (plastic) and QR2 (metal) can not be combined
Thread seal with captive O-ring

For further information about assembling and tolerances of adaptable tubing can be found in the "Technical information" document (available in the MediaCentre).

Technical information

Material	
Housing	Brass, nickel-plated
Seal	Acrylonitrile butadiene rubber
Tooth lock washer	Stainless steel
Release ring	Brass, nickel-plated
Thread	Brass, nickel-plated

Dimensions



Dimensions

Part No.	Port D	Port G	ØB	ØE	H	L	L1	A*	SW
1823391709	Ø 4	M5	9	8	4	14.5	19	14	9
1823391889	Ø 6	M5	11	8	4	14.5	21	16	9
1823391885	Ø 4	M7	9	10	6	16.5	18	14	9
1823391886	Ø 6	M7	11	10	6	16.5	19.5	16	9
1823391710	Ø 4	G 1/8	9	13	6	20	19	15	13
1823391711	Ø 6	G 1/8	11	13	6	20	21	16	13
1823391712	Ø 8	G 1/8	13	13	6	20	24	18	13

UK Office
5 Caulside Drive
Antrim
BT41 2DU
United Kingdom
+44 (0) 28 9448 1808

European Office
Unit 6, Saint Anthony's Business Park
Dublin
D22 VW95
Ireland
+353 (0) 1 4373653



Part No.	Port D	Port G	ØB	ØE	H	L	L1	A*	SW
R412007687	Ø 10	G 1/8	15	13	6	24	27	19	13
1823391713	Ø 4	G 1/4	9	16	8	24	19	15	13
1823391714	Ø 6	G 1/4	11	16	8	24	21	16	13
1823391715	Ø 8	G 1/4	13	16	8	24	24	18	13
1823391718	Ø 10	G 1/4	15	16	8	24	27	19	16
1823391843	Ø 12	G 1/4	17	16	8	30.5	29	20	16
1823391716	Ø 8	G 3/8	13	20	9	25.5	24	18	13
1823391717	Ø 10	G 3/8	15	20	9	28	27	19	16
1823391838	Ø 12	G 3/8	17	20	9	28.5	28	20	20
1823391839	Ø 14	G 3/8	20	20	9	28.5	31	22	20
R412010182	Ø16	G 3/8	23	20	9	33.5	33	23.5	20
R412007589	Ø 10	G 1/2	15	25	11	30	27	19	16
1823391840	Ø 12	G 1/2	17	25	11	33.5	28	20	20
1823391841	Ø 14	G 1/2	20	25	11	33.5	31	22	20
R412007956	Ø16	G 1/2	23	25	11	38	33	23.5	20

*