

Series QR2-S, standard

- Swivel banjo connection 1-fold, with hexagon socket, rotatable
- External thread
- M5 G 1/8 G 1/4 G 3/8
- push-in fitting
- Ø 4 Ø 5 Ø 6 Ø 8 Ø 10 Ø 12
- QR2-S-RI1



Working pressure min./max.

-0,95 ... 16 bar

Ambient temperature min./max.

-20 ... 80 °C

Weight

See table below

Technical data

Part No.	Port G	Port D	Delivery unit	Weight
1823391652	M5	Ø 4	10 piece	0,01 kg
1823391653	M5	Ø 5	10 piece	0,016 kg
1823391654	G 1/8	Ø 4	10 piece	0,019 kg
1823391655	G 1/8	Ø 5	10 piece	0,021 kg
1823391656	G 1/8	Ø 6	10 piece	0,022 kg
1823391657	G 1/8	Ø 8	10 piece	0,026 kg
1823391658	G 1/4	Ø 6	10 piece	0,028 kg
1823391659	G 1/4	Ø 8	10 piece	0,039 kg
1823391660	G 1/4	Ø 10	10 piece	0,042 kg
1823391927	G 1/4	Ø 12	10 piece	0,047 kg
1823391897	G 3/8	Ø 8	2 piece	0,042 kg
1823391898	G 3/8	Ø 10	2 piece	0,044 kg
1823391899	G 3/8	Ø 12	2 piece	0,045 kg

Weight per piece

Technical information

The series QR1 (plastic) and QR2 (metal) can not be combined
Thread seal with captive O-ring

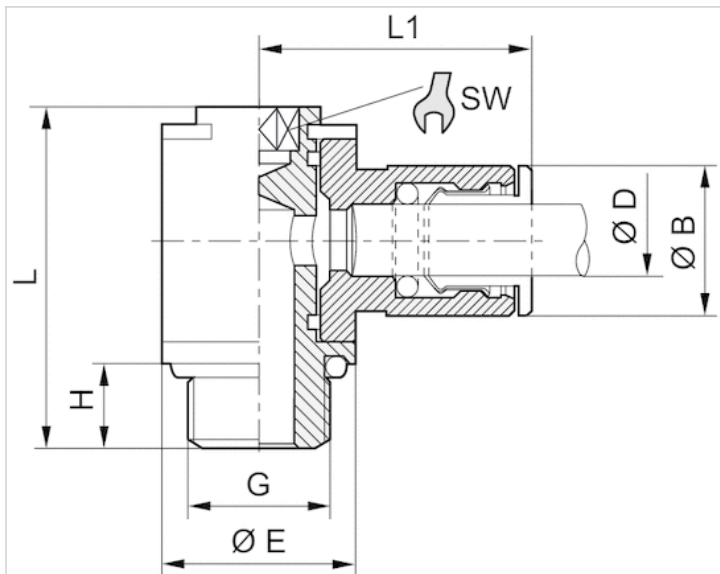
For further information about assembling and tolerances of adaptable tubing can be found in the "Technical information" document (available in the MediaCentre).

Technical information

Material

Housing	Brass, nickel-plated
Seal	Acrylonitrile butadiene rubber
Tooth lock washer	Stainless steel
Release ring	Brass, nickel-plated
Thread	Brass, nickel-plated

Dimensions



Dimensions

Part No.	Port D	Port G	Ø B	Ø E	H	L	L1	SW
1823391652	Ø 4	M5	9	8	4	17	18.5	2
1823391653	Ø 5	M5	10	8	4	17	19.5	2
1823391654	Ø 4	G 1/8	9	14	6	25	21	3
1823391655	Ø 5	G 1/8	10	14	6	25	22.5	3
1823391656	Ø 6	G 1/8	11	14	6	25	23	3
1823391657	Ø 8	G 1/8	13	14	6	25	24.5	3
1823391658	Ø 6	G 1/4	11	18	8	29.3	24	4
1823391659	Ø 8	G 1/4	13	18	8	29.3	26	4
1823391660	Ø 10	G 1/4	15	18	8	29.3	27	4
1823391927	Ø 12	G 1/4	17	18	8	29.3	28	4
1823391897	Ø 8	G 3/8	13	21	9	34	28	5
1823391898	Ø 10	G 3/8	15	21	9	34	29	5
1823391899	Ø 12	G 3/8	17	21	9	34	30	5