

Series QR2-S, standard

- Swivel banjo connection 1-fold
- External thread
- M5 G 1/8 G 1/4 G 3/8
- push-in fitting
- Ø 4 Ø 5 Ø 6 Ø 8 Ø 10 Ø 12
- QR2-S-RW1



Working pressure min./max.

-0,95 ... 16 bar

Ambient temperature min./max.

-20 ... 80 °C

Weight

See table below

Technical data

Part No.	Port G	Port D	Delivery unit	Weight
1823391549	M5	Ø 4	10 piece	0,01 kg
1823391550	M5	Ø 5	10 piece	0,016 kg
1823391905	M5	Ø 6	10 piece	0,018 kg
1823391551	G 1/8	Ø 4	10 piece	0,024 kg
1823391552	G 1/8	Ø 5	10 piece	0,026 kg
1823391553	G 1/8	Ø 6	10 piece	0,027 kg
1823391554	G 1/8	Ø 8	10 piece	0,032 kg
1823391556	G 1/4	Ø 6	10 piece	0,035 kg
1823391557	G 1/4	Ø 8	10 piece	0,048 kg
1823391558	G 1/4	Ø 10	5 piece	0,052 kg
1823391559	G 3/8	Ø 8	5 piece	0,072 kg
1823391560	G 3/8	Ø 10	5 piece	0,077 kg
1823391561	G 3/8	Ø 12	5 piece	0,088 kg

Weight per piece

Technical information

The series QR1 (plastic) and QR2 (metal) can not be combined
Thread seal with captive O-ring

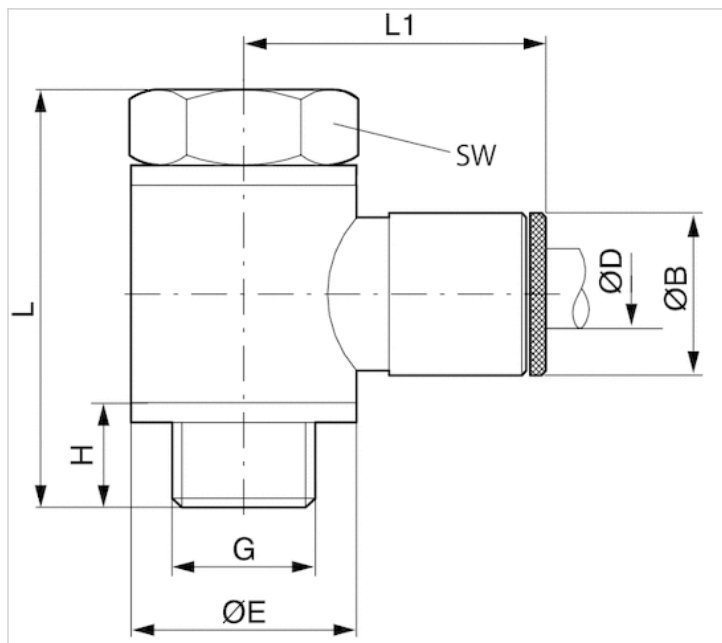
For further information about assembling and tolerances of adaptable tubing can be found in the "Technical information" document (available in the MediaCentre).

Technical information

Material

Housing	Brass, nickel-plated
Seal	Acrylonitrile butadiene rubber
Tooth lock washer	Stainless steel
Release ring	Brass, nickel-plated
Thread	Brass, nickel-plated

Dimensions



Dimensions

Part No.	Port D	Port G	L	L1	H	Ø B	Ø E	SW
1823391549	Ø 4	M5	17.5	18.5	4.5	9	7	8
1823391550	Ø 5	M5	17.5	19.5	4.5	10	7	8
1823391905	Ø 6	M5	19	19	4.5	10.5	10	8
1823391551	Ø 4	G 1/8	28	21	7.5	9	14	14
1823391552	Ø 5	G 1/8	28	22.5	7.5	10	14	14
1823391553	Ø 6	G 1/8	28	22.5	7.5	11	14	14
1823391554	Ø 8	G 1/8	28	24.5	7.5	13	14	14
1823391556	Ø 6	G 1/4	33	24	9	11	18	17
1823391557	Ø 8	G 1/4	33	26	9	13	18	17
1823391558	Ø 10	G 1/4	33	27	9	15	18	17
1823391559	Ø 8	G 3/8	36	28	9	13	21	19
1823391560	Ø 10	G 3/8	36	29	9	15	21	19
1823391561	Ø 12	G 3/8	36	30	9	17	21	19