

Series QR2-S, standard

- T-Banjo connection
- External thread
- M5 G 1/8 G 1/4 G 3/8
- push-in fitting
- Ø 4 Ø 5 Ø 6 Ø 8 Ø 10 Ø 12
- QR2-S-RTS



Working pressure min./max.	-0,95 ... 16 bar
Ambient temperature min./max.	-20 ... 80 °C
Weight	See table below

Technical data

Part No.	Port G	Port D	Delivery unit	Weight
1823391562	M5	Ø 4	10 piece	0,02 kg
1823391563	M5	Ø 5	10 piece	0,024 kg
1823391564	G 1/8	Ø 4	10 piece	0,034 kg
1823391565	G 1/8	Ø 5	10 piece	0,036 kg
1823391566	G 1/8	Ø 6	10 piece	0,038 kg
1823391567	G 1/8	Ø 8	10 piece	0,041 kg
1823391568	G 1/4	Ø 6	10 piece	0,054 kg
1823391569	G 1/4	Ø 8	10 piece	0,056 kg
1823391570	G 1/4	Ø 10	5 piece	0,063 kg
1823391571	G 3/8	Ø 8	5 piece	0,076 kg
1823391572	G 3/8	Ø 10	5 piece	0,096 kg
1823391573	G 3/8	Ø 12	5 piece	0,117 kg

Weight per piece

Technical information

The series QR1 (plastic) and QR2 (metal) can not be combined
Thread seal with captive O-ring

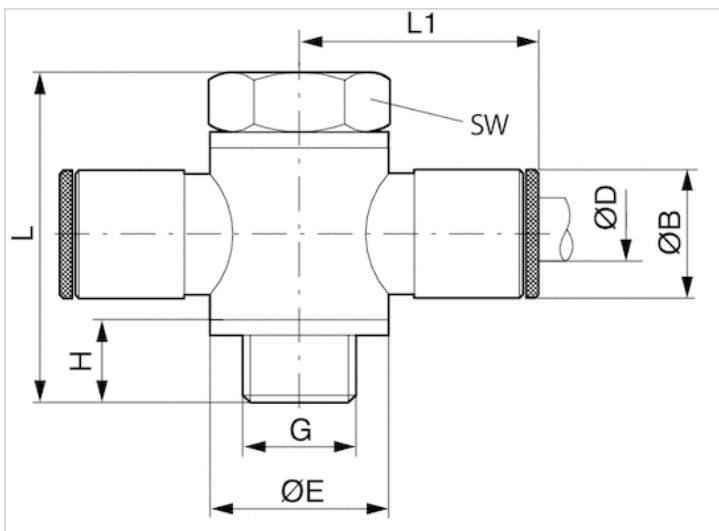
For further information about assembling and tolerances of adaptable tubing can be found in the "Technical information" document (available in the MediaCentre).

Technical information

Material

Housing	Brass, nickel-plated
Seal	Acrylonitrile butadiene rubber
Tooth lock washer	Stainless steel
Release ring	Brass, nickel-plated
Thread	Brass, nickel-plated

Dimensions



Dimensions

Part No.	Port D	Port G	Ø B	Ø E	H	L	L1	SW
1823391562	Ø 4	M5	9	8	4.5	17.5	18.5	8
1823391563	Ø 5	M5	10	7	4.5	17.5	19.5	8
1823391564	Ø 4	G 1/8	9	14	7.5	28	21	14
1823391565	Ø 5	G 1/8	10	14	7.5	28	22.5	14
1823391566	Ø 6	G 1/8	11	14	7.5	28	23	14
1823391567	Ø 8	G 1/8	13	14	7.5	28	24.5	14
1823391568	Ø 6	G 1/4	11	18	9	33	24	17
1823391569	Ø 8	G 1/4	13	18	9	33	26	17
1823391570	Ø 10	G 1/4	15	18	9	33	27	17
1823391571	Ø 8	G 3/8	13	21	9.5	36	28	22
1823391572	Ø 10	G 3/8	15	21	9.5	36	29	22
1823391573	Ø 12	G 3/8	17	21	9.5	36	30	22