

Series QR2-S, standard

- 2x banjo union
- M5 G 1/8 G 1/4 G 3/8
- push-in fitting
- Ø 4 Ø 5 Ø 6 Ø 8 Ø 10 Ø 12
- QR2-S-RT1



Working pressure min./max.	-0,95 ... 16 bar
Ambient temperature min./max.	-20 ... 80 °C
Weight	See table below

Technical data

Part No.	Port G	Port D	Delivery unit	Weight
1823391595	M5	Ø 4	10 piece	0,013 kg
1823391596	M5	Ø 5	10 piece	0,017 kg
1823391597	G 1/8	Ø 4	10 piece	0,02 kg
1823391598	G 1/8	Ø 5	10 piece	0,022 kg
1823391599	G 1/8	Ø 6	10 piece	0,024 kg
1823391600	G 1/8	Ø 8	10 piece	0,027 kg
1823391601	G 1/4	Ø 6	10 piece	0,027 kg
1823391602	G 1/4	Ø 8	10 piece	0,029 kg
1823391603	G 1/4	Ø 10	5 piece	0,036 kg
1823391604	G 3/8	Ø 8	5 piece	0,031 kg
1823391605	G 3/8	Ø 10	5 piece	0,051 kg
1823391606	G 3/8	Ø 12	5 piece	0,072 kg

Weight per piece

Technical information

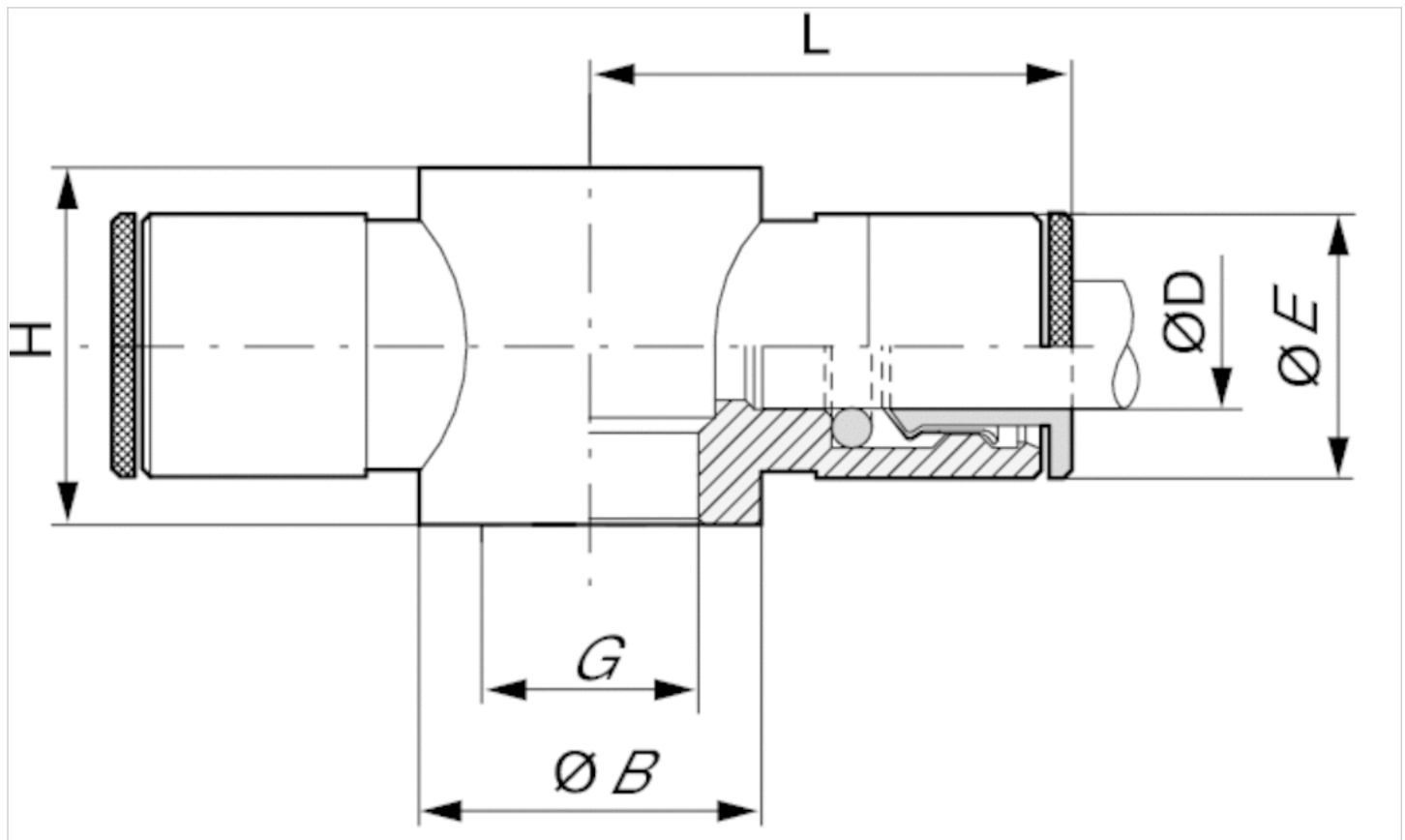
The series QR1 (plastic) and QR2 (metal) can not be combined
The banjo unions and banjo bolts of the QR2 and NU2 series can be combined.

For further information about assembling and tolerances of adaptable tubing can be found in the "Technical information" document (available in the MediaCentre).

Technical information

Material	
Housing	Brass, nickel-plated
Seal	Acrylonitrile butadiene rubber
Tooth lock washer	Stainless steel
Release ring	Brass, nickel-plated

Dimensions



Dimensions

Part No.	Port D	Port G	Ø B	Ø E	H	L
1823391595	Ø 4	M5	8	9	9	18.5
1823391596	Ø 5	M5	8	10	9	19.5
1823391597	Ø 4	G 1/8	14	9	15	21
1823391598	Ø 5	G 1/8	14	10	15	22.5
1823391599	Ø 6	G 1/8	14	11	15	23
1823391600	Ø 8	G 1/8	14	13	15	24.5
1823391601	Ø 6	G 1/4	18	11	17	24
1823391602	Ø 8	G 1/4	18	13	17	26
1823391603	Ø 10	G 1/4	18	15	17	27

UK Office
 5 Caulside Drive
 Antrim
 BT41 2DU
 United Kingdom
 +44 (0) 28 9448 1808

European Office
 Unit 6, Saint Anthony's Business Park
 Dublin
 D22 VW95
 Ireland
 +353 (0) 1 4373653



Part No.	Port D	Port G	Ø B	Ø E	H	L
1823391604	Ø 8	G 3/8	21	13	20	28
1823391605	Ø 10	G 3/8	22	15	20	29
1823391606	Ø 12	G 3/8	22	17	20	30