

Series QR2-S, standard

- 1x banjo union
- M5 G 1/8 G 1/4 G 3/8
- push-in fitting
- Ø 4 Ø 5 Ø 6 Ø 8 Ø 10 Ø 12
- QR2-S-RV1



Working pressure min./max.	-0,95 ... 16 bar
Ambient temperature min./max.	-20 ... 80 °C
Weight	See table below

Technical data

Part No.	Port G	Port D	Delivery unit	Weight
1823391583	M5	Ø 4	10 piece	0,007 kg
1823391584	M5	Ø 5	10 piece	0,009 kg
1823391585	G 1/8	Ø 4	10 piece	0,01 kg
1823391586	G 1/8	Ø 5	10 piece	0,012 kg
1823391587	G 1/8	Ø 6	10 piece	0,013 kg
1823391588	G 1/8	Ø 8	10 piece	0,018 kg
1823391589	G 1/4	Ø 6	10 piece	0,018 kg
1823391590	G 1/4	Ø 8	10 piece	0,021 kg
1823391591	G 1/4	Ø 10	5 piece	0,025 kg
1823391592	G 3/8	Ø 8	5 piece	0,027 kg
1823391593	G 3/8	Ø 10	5 piece	0,032 kg
1823391594	G 3/8	Ø 12	5 piece	0,043 kg

Weight per piece

Technical information

The series QR1 (plastic) and QR2 (metal) can not be combined

For further information about assembling and tolerances of adaptable tubing can be found in the "Technical information" document (available in the MediaCentre).

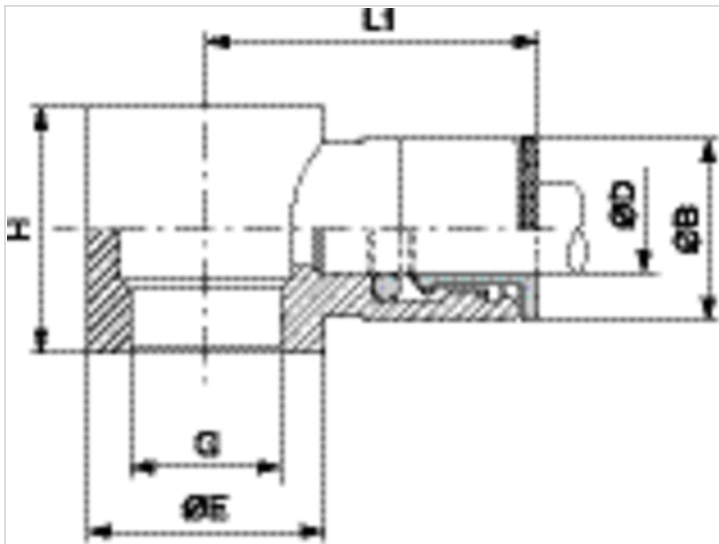
Technical information

Material

Housing	Brass, nickel-plated
Seal	Acrylonitrile butadiene rubber
Tooth lock washer	Stainless steel
Release ring	Brass, nickel-plated

Dimensions

Dimensions



Dimensions

Part No.	Port D	Port G	Ø B	Ø E	H	L1
1823391583	Ø 4	M5	9	8.2	9	18.5
1823391584	Ø 5	M5	10	7	9	19.5
1823391585	Ø 4	G 1/8	9	14	15	21
1823391586	Ø 5	G 1/8	10	14	15	22.5
1823391587	Ø 6	G 1/8	11	14	15	23
1823391588	Ø 8	G 1/8	13	14	15	24.5
1823391589	Ø 6	G 1/4	11	18	17	24
1823391590	Ø 8	G 1/4	13	18	17	26
1823391591	Ø 10	G 1/4	15	18	17	27
1823391592	Ø 8	G 3/8	13	21	20	28
1823391593	Ø 10	G 3/8	15	21	20	29
1823391594	Ø 12	G 3/8	17	21	20	30