

Series QR2-S, standard

- Blanking plug
- pin bushing
- Ø 4 Ø 5 Ø 6 Ø 8 Ø 10 Ø 12 Ø 14
- QR2-S-RBS



Working pressure min./max.	-0,95 ... 16 bar
Ambient temperature min./max.	-20 ... 80 °C
Weight	See table below

Technical data

Part No.	Port G	Delivery unit	Weight
1823391607	Ø 4	25 piece	0,002 kg
1823391608	Ø 5	25 piece	0,006 kg
1823391609	Ø 6	25 piece	0,008 kg
1823391610	Ø 8	25 piece	0,015 kg
1823391611	Ø 10	25 piece	0,018 kg
1823391612	Ø 12	10 piece	0,023 kg
1823391613	Ø 14	10 piece	0,037 kg

Weight per piece

Technical information

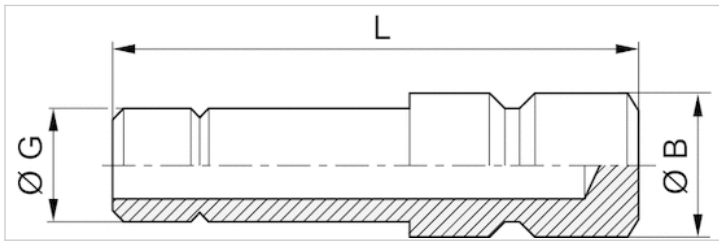
The series QR1 (plastic) and QR2 (metal) can not be combined

For further information about assembling and tolerances of adaptable tubing can be found in the "Technical information" document (available in the MediaCentre).

Technical information

Material	
Housing	Brass, nickel-plated

Dimensions



Dimensions

Part No.	Port G	Ø B	L
1823391607	Ø 4	5	25.5
1823391608	Ø 5	6	26.5
1823391609	Ø 6	7	27.5
1823391610	Ø 8	9	30.5
1823391611	Ø 10	11	35
1823391612	Ø 12	13	37
1823391613	Ø 14	15	40