

Series QR2-F Heat-resistant

- Straight push-in fitting, reducing
- push-in fitting
- Ø 6
- pin bushing
- Ø 8
- QR2-F-RED



Working pressure min./max.	-0,95 ... 16 bar
Ambient temperature min./max.	-20 ... 150 °C
Weight	See table

Technical data

Part No.	Port G	Port D	Delivery unit	Weight
R412007682	Ø 6	Ø 8	10 piece	0,01 kg
R412007683	Ø 6	Ø 10	10 piece	0,016 kg

Technical information

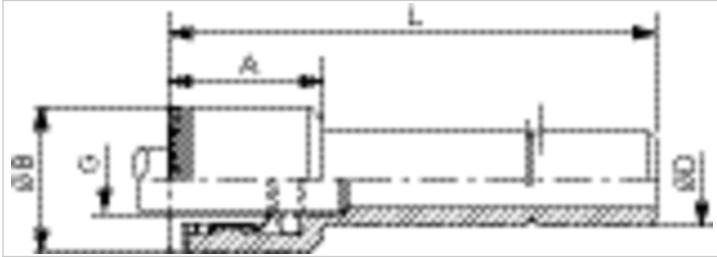
The series QR1 (plastic) and QR2 (metal) can not be combined

For further information about assembling and tolerances of adaptable tubing can be found in the "Technical information" document (available in the MediaCentre).

Technical information

Material	
Housing	Brass, nickel-plated
Seal	Fluorocaoutchouc
Tooth lock washer	Stainless steel
Release ring	Brass, nickel-plated

Dimensions



Dimensions

Part No.	Port D	Port G	L	Ø B	A*
R412007682	Ø 8	Ø 6	33.5	11	16
R412007683	Ø 10	Ø 6	36.5	11	16

*