




Pressure regulator

- Qn = 1050-1070 l/min
- standard ISO 5599-1
- Frame size ISO 2
- Controlled port 1 2 2, 4



Working pressure min./max.	12 bar
Adjustment range min./max.	0,5 ... 8 bar
Ambient temperature min./max.	-15 ... 50 °C
Medium	Compressed air
Max. particle size	5 µm
Oil content of compressed air	0 ... 5 mg/m ³
Tightening torque for mounting screws	5 Nm
Weight	See table below
	The delivered product may vary from that in the illustration.

Technical data

Part No.		Frame size	Flow	Controlled port	Weight
			Qn		
R422103092		ISO 2	1050 l/min	1	1 kg
R422103093		ISO 2	1070 l/min	2	1,11 kg
R422103094		ISO 2	1070 l/min	2, 4	1,6 kg

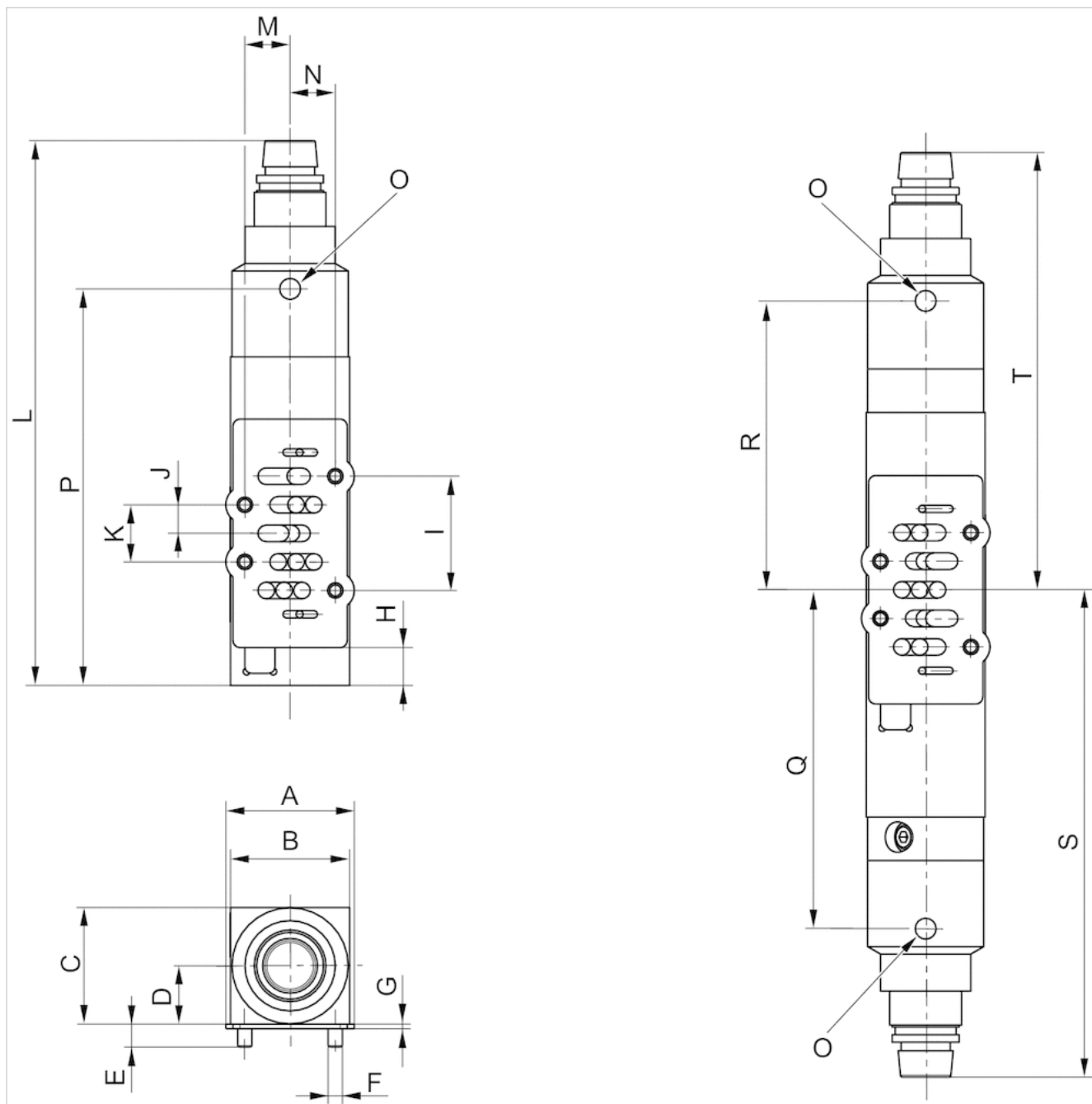
Scope of delivery incl. seal and mounting screws, Order pressure gauge separately, Nominal flow Qn at 6 bar and $\Delta p = 1$ bar .

Technical information

Material	
Housing	Aluminum
Seals	Butadiene rubber

Dimensions

Dimensions



Dimensions

Part No.	A	B	C	D	E	F	G	H	I	J	K	L	M	N	O	P	Q	R
R422103092	54	50	48.90	24.45	9.70	M6	2	15.90	48	12	24	228.90	19	19	G 1/8	166.58	-	-
R422103093	54	50	48.90	24.45	9.70	M6	2	15.90	48	12	24	247.20	19	19	G 1/8	183.84	-	-
R422103094	54	50	48.90	24.45	9.70	M6	2	-	48	12	24	-	19	19	G 1/8	-	142.34	121.34

S	T
-	-
-	-
204.66	183.66

UK Office
5 Caulside Drive
Antrim
BT41 2DU
United Kingdom
+44 (0) 28 9448 1808

European Office
Unit 6, Saint Anthony's Business Park
Dublin
D22 VW95
Ireland
+353 (0) 1 4373653

