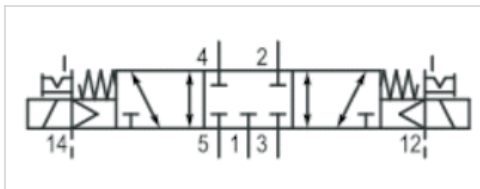


5/3-directional valve, Series TC08 - inch

- Qn = 800 l/min
- Pilot valve width : 15 mm
- Plate connection Pipe connection
- Compressed air connection output : 1/8-27 NPTF
- Electrical connection : Plug, ISO 15217, form C
- Can be assembled into blocks
- Manual override : with detent
- single solenoid
- with air spring return
- Pilot : external



Version	Spool valve, positive overlapping
Activation	Electrically
Pilot	external
Sealing principle	Soft sealing
Blocking principle	Plate principle
Working pressure min./max.	-0,9 ... 10 bar
Control pressure min./max.	3 ... 10 bar
Ambient temperature min./max.	-10 ... 50 °C
Medium temperature min./max.	-10 ... 50 °C
Medium	Compressed air
Max. particle size	5 µm
Oil content of compressed air	0 ... 1 mg/m ³
Nominal flow Qn	800 l/min
Compressed air connection	according to ANSI B1.20.3
Connector standard	ISO 15217
Protection class with connection	IP65
Duty cycle	100 %
Typ. switch-on time	10 ms
Typ. switch-off time	11 ms
Generic emission standard in accordance with	EN 50081:1992
Mounting screw tightening torque	2,5 Nm
Weight	0,125 kg

Technical data

Part No.	MO	Compressed air connection	Operational voltage
		Output	DC
R422101165		1/8-27 NPTF	24 V
R422101169		1/8-27 NPTF	24 V
R422101173		1/8-27 NPTF	24 V

Part No.	Voltage tolerance	Power consumption	Flow conductance	Flow conductance
	DC	DC	b	C-value
R422101165	-10% / +10%	2 W	0,36	3,5 l/(s*bar)
R422101169	-10% / +10%	2 W	0,36	3,5 l/(s*bar)
R422101173	-10% / +10%	2 W	0,36	3,5 l/(s*bar)



Part No.	Nominal resistance
R422101165	185 Ω
R422101169	185 Ω
R422101173	185 Ω

Technical information

The min. control pressure must be adhered to, since otherwise faulty switching and valve failure may result!
 The pressure dew point must be at least 15 °C under ambient and medium temperature and may not exceed 3 °C .
 The oil content of compressed air must remain constant during the life cycle.
 Use only the approved oils from AVENTICS. Further information can be found in the "Technical information" document (available in the MediaCentre).

Technical information

Material	
Housing	Polyamide, fiber-glass reinforced
Seals	Acrylonitrile butadiene rubber Polyurethane
Front plate	Polyamide, fiber-glass reinforced
Threaded bushing	Brass Die cast zinc, nickel-plated chrome-plated

