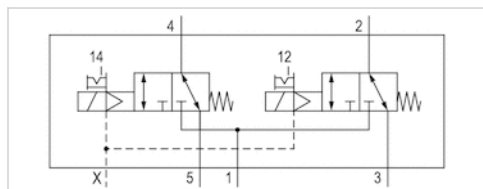


2x3/2-directional valve, Series TC08

- Operating voltage 24 V DC
- Qn = 600 l/min
- Pilot valve width : 15 mm
- NC/NC
- Plate connection Pipe connection
- Compressed air connection output : G 1/8
- Electrical connection : Plug, ISO 15217, form C
- Can be assembled into blocks
- Manual override : with detent, without detent
- Double solenoid
- Pilot : external



Version	Spool valve, positive overlapping
Activation	Electrically
Pilot	external
Sealing principle	Soft sealing
Blocking principle	Plate principle
Working pressure min./max.	-0,9 ... 10 bar
Control pressure min./max.	2,5 ... 10 bar
Ambient temperature min./max.	-10 ... 50 °C
Medium temperature min./max.	-10 ... 50 °C
Medium	Compressed air
Max. particle size	5 µm
Oil content of compressed air	0 ... 5 mg/m ³
Nominal flow Qn	600 l/min
Connector standard	ISO 15217
Protection class with connection	IP65
Duty cycle	100 %
Generic emission standard in accordance with	EN 50081-2:1993
Mounting screw tightening torque	2 Nm
Weight	0,166 kg

Technical data

Part No.	MO	Compressed air connection	
		Input	Output
R422102062		G 1/8	G 1/8
R422102066		G 1/8	G 1/8
R422102070		G 1/8	G 1/8
R422102074		G 1/8	G 1/8
R422102078		G 1/8	G 1/8
R422102082		G 1/8	G 1/8

Part No.	Compressed air connection		Operational voltage
	Output	Exhaust	
R422102062	G 1/8	G 1/8	24 V DC
R422102066	G 1/8	G 1/8	24 V DC
R422102070	G 1/8	G 1/8	24 V DC

Part No.	Compressed air connection	Compressed air connection	Operational voltage
	Output	Exhaust	DC
R422102074	G 1/8	G 1/8	24 V
R422102078	G 1/8	G 1/8	24 V
R422102082	G 1/8	G 1/8	24 V

Part No.	Voltage tolerance	Power consumption	Nominal resistance
	DC	DC	
R422102062	-10% / +10%	2 W	280 Ω
R422102066	-10% / +10%	2 W	280 Ω
R422102070	-10% / +10%	2 W	280 Ω
R422102074	-10% / +10%	2 W	280 Ω
R422102078	-10% / +10%	2 W	280 Ω
R422102082	-10% / +10%	2 W	280 Ω

Technical information

The min. control pressure must be adhered to, since otherwise faulty switching and valve failure may result!

The pressure dew point must be at least 15 °C under ambient and medium temperature and may not exceed 3 °C .

The oil content of compressed air must remain constant during the life cycle.

Use only the approved oils from AVENTICS. Further information can be found in the "Technical information" document (available in the MediaCentre).

Technical information

Material	
Housing	Polyamide, fiber-glass reinforced
Seals	Acrylonitrile butadiene rubber Polyurethane
Front plate	Polyamide, fiber-glass reinforced
Threaded bushing	Brass Die cast zinc, nickel-plated chrome-plated

Dimensions

Dimensions

