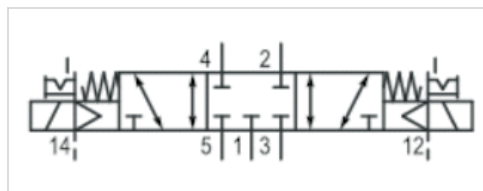


5/3-directional valve, Series TC08

- Qn = 700 l/min
- Pilot valve width : 15 mm
- closed center
- Plate connection Pipe connection
- Compressed air connection output : G 1/8
- Electrical connection : Plug, M8, 4-pin
- Can be assembled into blocks
- Manual override : with detent
- Double solenoid
- Pilot : external



Version	Spool valve, positive overlapping
Activation	Electrically
Pilot	external
Sealing principle	Soft sealing
Blocking principle	Plate principle
Working pressure min./max.	-0,9 ... 10 bar
Control pressure min./max.	3 ... 10 bar
Ambient temperature min./max.	-10 ... 50 °C
Medium temperature min./max.	-10 ... 50 °C
Medium	Compressed air
Max. particle size	5 µm
Oil content of compressed air	0 ... 5 mg/m ³
Nominal flow Qn	700 l/min
Connector standard	DIN EN 60947-5-2
Protection class acc. to DIN EN 61140	Class III
Electrically	
Protection class with connection	IP65
LED status display	Yellow
Duty cycle	100 %
Typ. switch-on time	10 ms
Typ. switch-off time	11 ms
Weight	0,165 kg

Technical data

Part No.	MO	Compressed air connection		Operational voltage
		Output	DC	
0820061796		G 1/8	24 V	
0820061797		G 1/8	24 V	
0820061798		G 1/8	24 V	
0820061896		G 1/8	24 V	
0820061897		G 1/8	24 V	
0820061898		G 1/8	24 V	

Part No.	Voltage tolerance	Power consumption	Flow conductance	Flow conductance
	DC	DC	b	C-value
0820061796	-10% / +10%	2,2 W	0,34	3 l/(s*bar)
0820061797	-10% / +10%	2,2 W	0,34	3 l/(s*bar)

Part No.	Voltage tolerance	Power consumption	Flow conductance	Flow conductance
	DC	DC	b	C-value
0820061798	-10% / +10%	2,2 W	0,34	3 l/(s*bar)
0820061896	-10% / +10%	2,2 W	0,34	3 l/(s*bar)
0820061897	-10% / +10%	2,2 W	0,34	3 l/(s*bar)
0820061898	-10% / +10%	2,2 W	0,34	3 l/(s*bar)

Part No.	Nominal resistance
0820061796	280 Ω
0820061797	280 Ω
0820061798	280 Ω
0820061896	280 Ω
0820061897	280 Ω
0820061898	280 Ω

Technical information

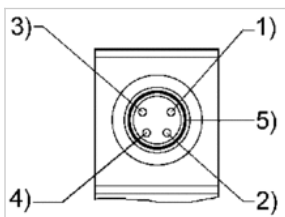
The min. control pressure must be adhered to, since otherwise faulty switching and valve failure may result!
 The pressure dew point must be at least 15 °C under ambient and medium temperature and may not exceed 3 °C .
 The oil content of compressed air must remain constant during the life cycle.
 Use only the approved oils from AVENTICS. Further information can be found in the "Technical information" document (available in the MediaCentre).

Technical information

Material	
Housing	Polyamide, fiber-glass reinforced
Seals	Acrylonitrile butadiene rubber Polyurethane
Front plate	Polyamide, fiber-glass reinforced
Threaded bushing	Brass Die cast zinc, nickel-plated chrome-plated

Pin assignments

PIN assignment and cable colors for valve plug connectors



PIN assignment: 1) PIN not assigned 2) PIN not assigned 3) 0 V 4) 24 V 5) LED Cable colors 1) Brown 2) White 3) Blue 4) Black