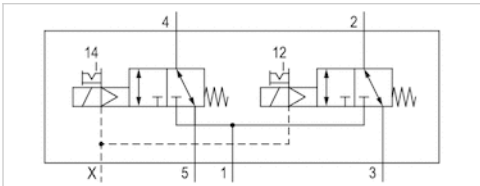






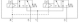

2x3/2-directional valve, Series TC08 - inch

- Qn = 600 l/min
- Pilot valve width : 15 mm
- NC/NC
- Plate connection Pipe connection
- Compressed air connection output : 1/8-27 NPTF
- Electrical connection : Plug, ISO 15217, form C
- Can be assembled into blocks
- Manual override : with detent
- Double solenoid
- With spring return
- Pilot : external



Version	Spool valve, positive overlapping
Activation	Electrically
Pilot	external
Sealing principle	Soft sealing
Blocking principle	Plate principle
Working pressure min./max.	-0,9 ... 10 bar
Control pressure min./max.	2,5 ... 10 bar
Ambient temperature min./max.	-10 ... 50 °C
Medium temperature min./max.	-10 ... 50 °C
Medium	Compressed air
Max. particle size	5 µm
Oil content of compressed air	0 ... 5 mg/m ³
Nominal flow Qn	600 l/min
Connector standard	ISO 15217
Protection class with connection	IP65
Duty cycle	100 %
Typ. switch-on time	10 ms
Typ. switch-off time	14 ms
Generic emission standard in accordance with	EN 50081-2:1993
Generic immunity standard in accordance with	EN 50082-2
Mounting screw tightening torque	2,5 Nm
Weight	0,166 kg

Technical data

Part No.			MO	Compressed air connection	Operational voltage
				Output	DC
R422102125		NC/NC		1/8-27 NPTF	24 V
R422102129		NO/NO		1/8-27 NPTF	24 V
R422102133		NC/NO		1/8-27 NPTF	24 V

Part No.	Voltage tolerance	Power consumption	Flow conductance	Flow conductance
	DC	DC	b	C-value
R422102125	-10% / +10%	2 W	0,27	2,8 l/(s*bar)
R422102129	-10% / +10%	2 W	0,27	2,8 l/(s*bar)
R422102133	-10% / +10%	2 W	0,27	2,8 l/(s*bar)

Part No.	Nominal resistance
R422102125	280 Ω
R422102129	280 Ω
R422102133	280 Ω

Technical information

The min. control pressure must be adhered to, since otherwise faulty switching and valve failure may result!

The pressure dew point must be at least 15 °C under ambient and medium temperature and may not exceed 3 °C .

The oil content of compressed air must remain constant during the life cycle.

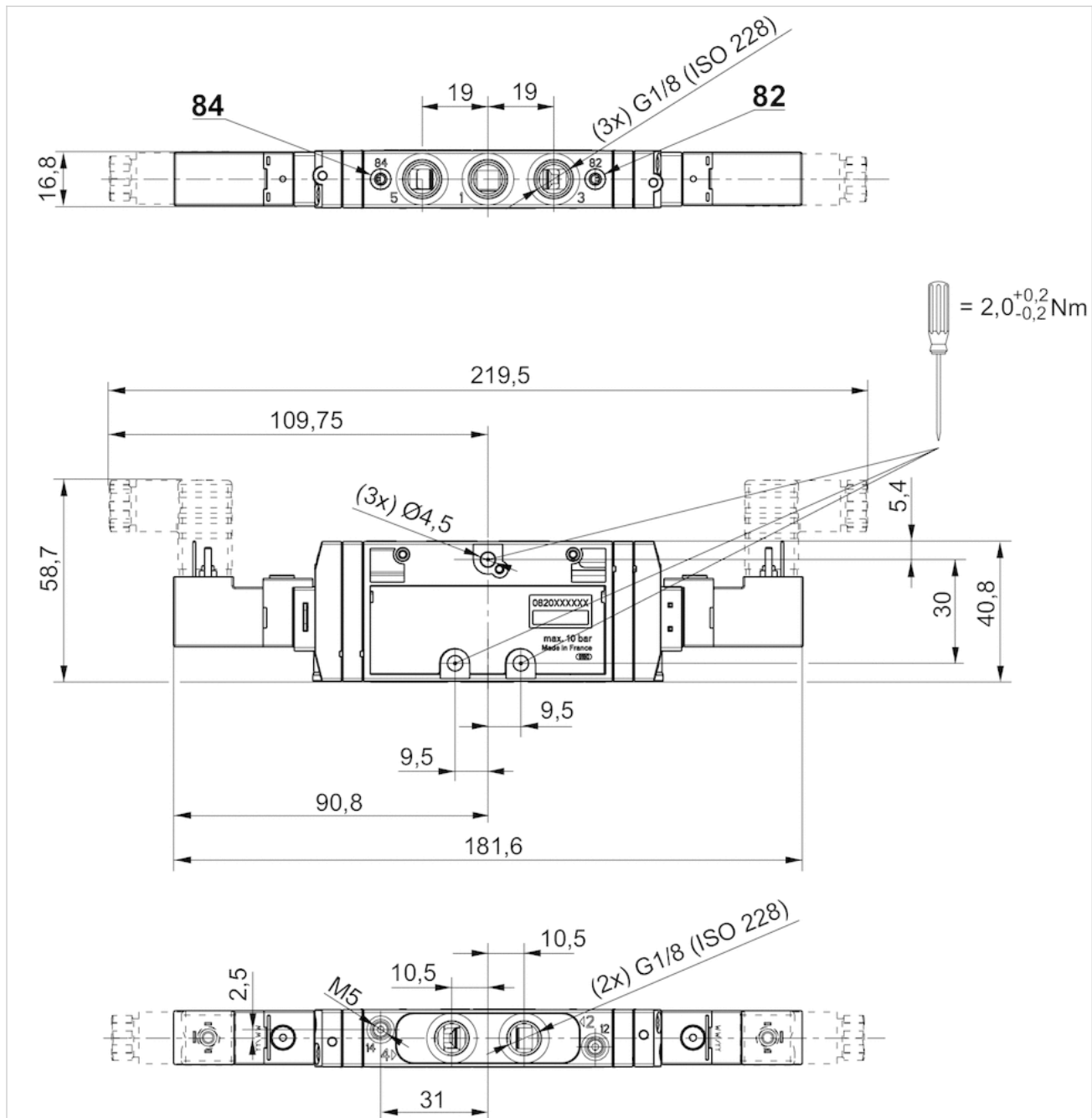
Use only the approved oils from AVENTICS. Further information can be found in the "Technical information" document (available in the MediaCentre).

Technical information

Material	
Housing	Polyamide, fiber-glass reinforced
Seals	Acrylonitrile butadiene rubber Polyurethane
Front plate	Polyamide, fiber-glass reinforced
Threaded bushing	Brass Die cast zinc, nickel-plated chrome-plated

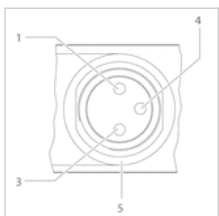
Dimensions

Dimensions



Pin assignments

PIN assignment and cable colors for valve plug connectors



PIN assignment: 1) PIN not assigned 3) 0 V 4) 24 V 5) LED Cable color 1) Brown 3) Blue 4) Black

UK Office
5 Caulside Drive
Antrim
BT41 2DU
United Kingdom
+44 (0) 28 9448 1808

European Office
Unit 6, Saint Anthony's Business Park
Dublin
D22 VW95
Ireland
+353 (0) 1 4373653



Note: Bi-polar protective circuit to prevent overvoltage